



www.shearline.com

## Tools Required

5/32" T-handle allen wrench  
3/16" T-handle allen wrench

Page 1



# SHEARLINE™ 2.0

**⚠ 110V**  
Operate at 110V only!

## STEP 1

Lift COVER

## STEP 2

Lift UPPER MODULE

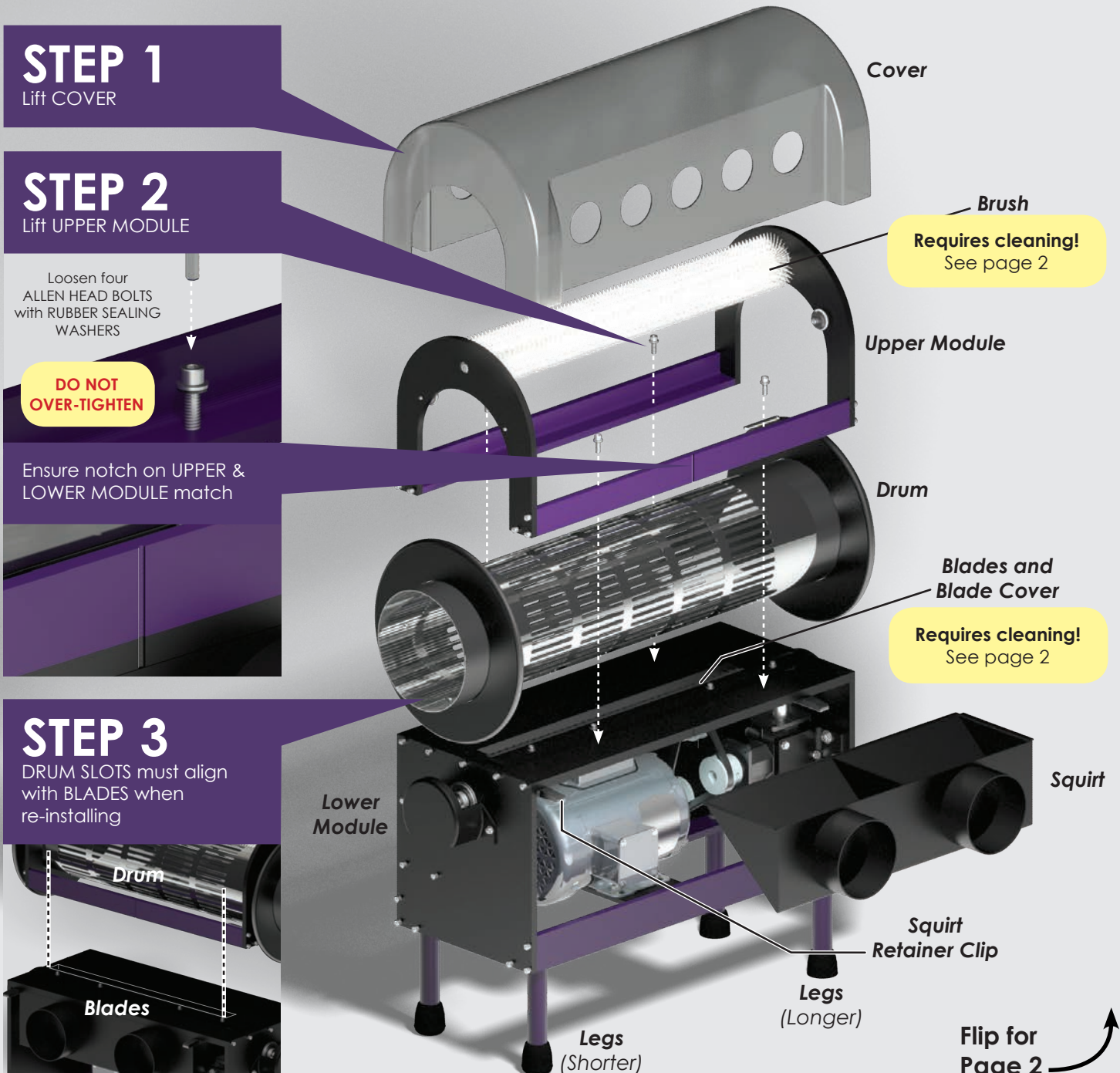
Loosen four  
ALLEN HEAD BOLTS  
with RUBBER SEALING  
WASHERS

**DO NOT  
OVER-TIGHTEN**

Ensure notch on UPPER &  
LOWER MODULE match

## STEP 3

DRUM SLOTS must align  
with BLADES when  
re-installing



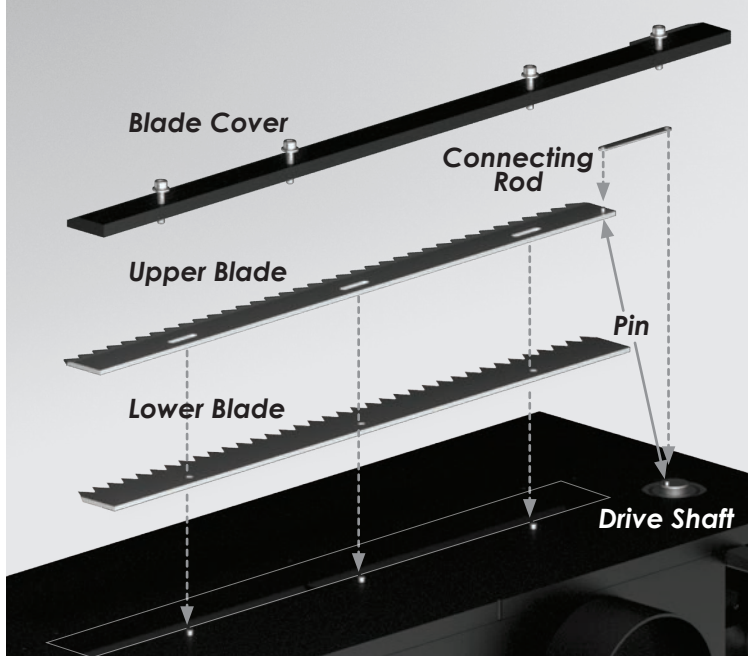
Get more in-depth instructions and manuals at [www.Shearline.com](http://www.Shearline.com)

# BLADE CLEANING AND LUBRICATION

BLADE and BLADE COVER must be removed then cleaned and lubricated every **2 hours of operation.**

## STEP 1

Remove BLADE COVER, UPPER AND LOWER BLADES, and CONNECTING ROD.



## STEP 3

Clean blade of debris with a wire brush in tray of ALCOHOL.

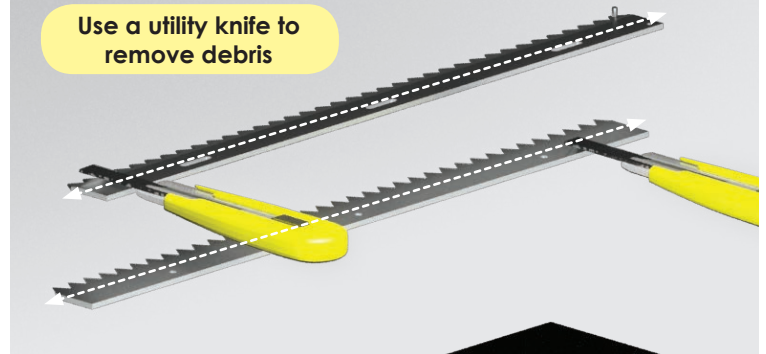
Keep tray covered so alcohol does not evaporate.



## STEP 2

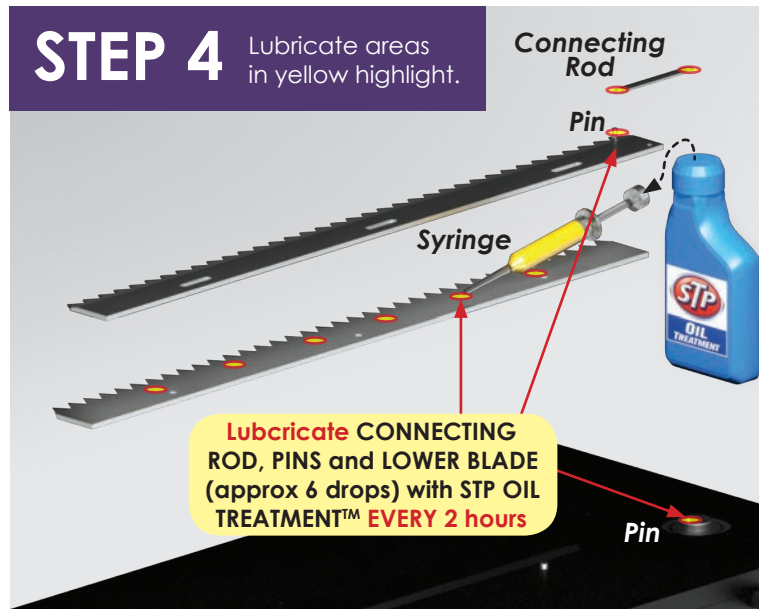
Clean build-up with utility knife.

Use a utility knife to remove debris



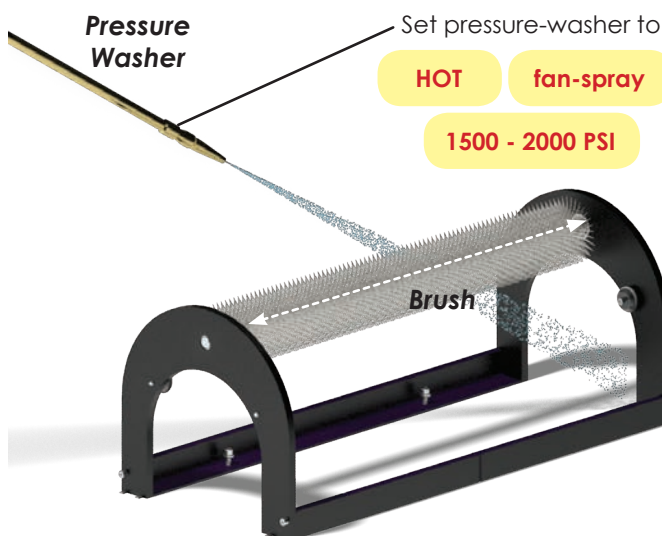
## STEP 4

Lubricate areas in yellow highlight.



# BRUSH CLEANING

The BRISTLES on the brush must be **kept straight!**



Set to **HOT**

Spin!

## STEP 1

Spin BRUSH with HOT water pressure.

Let **HEAT** softens bristles

Spin until bristles become straight

## STEP 2

Spin BRUSH until BRISTLES are **STRAIGHT!**

Let **COOL** to harden

Get more in-depth instructions and manuals at [www.Shearline.com](http://www.Shearline.com)